



Engine	Cummins L9PLUST3
Rated Power	264 kW (354 hp / 359 ps) @ 2,100 rpm
Operating Weight	39,000 kg
Max. Digging Depth	6,890 mm
Standard Bucket Capacity	2.0 m ³

939F EXCAVATOR

939F SPECIFICATIONS >>>

ENGINE

Emission Regulation	CN III
Manufacturer	Cummins
Model	L9PLUST3
Rated Power	264 kW (354 hp / 359 ps) @ 2,100 rpm
Peak Torque	1,600 N·m @ 1,400 rpm
Number of Cylinders	6
Displacement	8.9 L

UNDERCARRIAGE

Number of Shoes per Side	49
Number of Upper Rollers per Side	2
Number of Bottom Rollers per Side	9

TRACK DRIVE

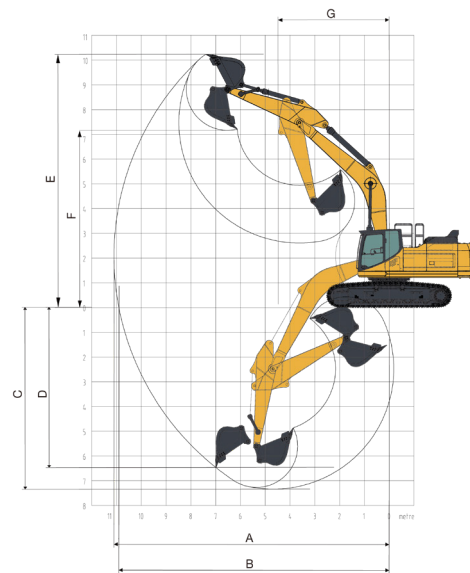
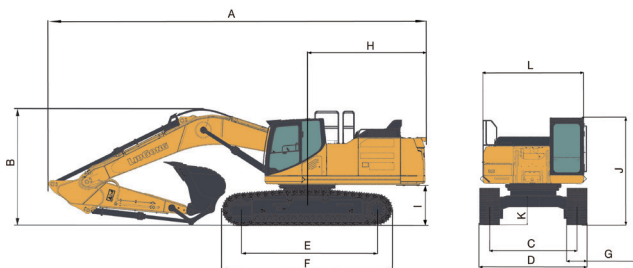
Maximum Travel Speed	5.5 km/h
Drawbar Pull	320 kN

HYDRAULIC SYSTEM

Main Pumps Total Flow	2 × 351 L/min
Relief Pressure, main	34.3 MPa

DIMENSION

A. Transport Length	11,450 mm
B. Transport Height – Top of Boom	3,800 mm
C. Track Gauge	2,590 mm
D. Undercarriage Width	3,190 mm
E. Length to Center of Rollers	4,140 mm
F. Track Length	5,075 mm
G. Track Shoe Width	600 mm
H. Tail Swing Radius	3,593 mm
I. Counterweight Ground Clearance	1,250 mm
J. Overall Height of Cab	3,175 mm
Overall Height of Cab - with OPG	3,310 mm
Overall Height of Cab - with Dome Lamp	3,310 mm
K. Min. Ground Clearance	545 mm
L. Overall Width of Upper Structure	2,995 / 3,163 mm



BOOM & ARM

Boom Length	6,400 mm
Arm Length	2,900 mm

BUCKET PERFORMANCE

Std. Bucket Heaped Capacity (Referenced)	2.0 m ³
--	--------------------

SERVICE CAPACITIES

Fuel Tank	620 L
Engine Oil	36 L
Cooling System	37 L
Hydraulic Reservoir	240 L
Hydraulic System Total	450 L

SWING SYSTEM

Swing Speed	10 rpm
-------------	--------

WORKING RANGE

A. Max. Digging Reach	10,728 mm
B. Max. Digging Reach on Ground	10,527 mm
C. Max. Digging Depth	6,890 mm
D. Max. Vertical Wall Digging Depth	5,085 mm
E. Max. Cutting Height	9,818 mm
F. Max. Dumping Height	6,655 mm
G. Max. Dumping Height	4,385 mm
Max. Digging Depth, 2.5 m (8') Level	6,710 mm
Bucket Digging Force (ISO)	290 kN
Arm Digging Force (ISO)	227 kN

Guangxi Liugong Machinery Co., Ltd.

No. 1 Liutai Road, Liuzhou, Guangxi 545007, PR China
 T: +86 772 3886124 E: overseas@liugong.com
 www.liugong.com

02/2025 Designed by LiuGong

Specifications and designs are subject to change without notice. Machines shown may include optional equipment. LiuGong standard and optional equipment may vary from region to region. Please consult your LiuGong dealer for information specific to your area. Engine power kW is converted to metric hp in this file (1 kW=1.34 hp).