



Engine	Cummins X15
Net Power	391 kW (524 hp / 532 ps) @ 1,800 rpm
Maximum Dig Depth	7,680 mm
Standard Bucket Capacity	5.0 m ³
Operating Mass	75,000-77,000 kg

975F EXCAVATOR

975F SPECIFICATIONS >>>

ENGINE

Emission Regulation	EU Stage V
Manufacturer	Cummins
Model	X15
Net Power	391 kW (524 hp / 532 ps) @ 1,800 rpm
Peak Torque	2,373 N·m @ 1,400 rpm
Number of Cylinders	6
Displacement	14.9 L

UNDERCARRIAGE

Shoe Width	650 mm
Number of Shoes per Side	48
Number of Upper Rollers per Side	3
Number of Bottom Rollers per Side	8

SWING SYSTEM

Swing Speed	7.51 rpm
-------------	----------

TRACK DRIVE

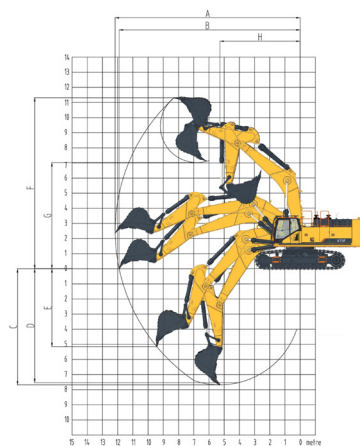
Maximum Travel Speed	4.7 km/h
Drawbar Pull	495 kN

HYDRAULIC SYSTEM

Main Pumps Total Flow	2×504 L/min
Relief Pressure, main	35 MPa
Relief Pressure, boost	37.3 MPa

DIMENSIONS

A. Transport Length	13,090 mm
B. Transport Height	4,710 mm
C. Track Gauge	3,350 / 2,710 mm
D. Transport Width	4,000 / 3,360 mm
E. Length to Center of Rollers	4,750 mm
F. Track Length	5,990 mm
G. Overall Width of Upper Structure	4,100 mm
H. Tail Swing Radius	4,490 mm
I. Counterweight Ground Clearance	1,495 mm
J. Cab Height	3,620 mm
K. Min. Ground Clearance	867 mm
L. Track Width	650 mm



BOOM & ARM

Boom Length	7,060 mm
Arm Length	2,900 mm

WORKING RANGE

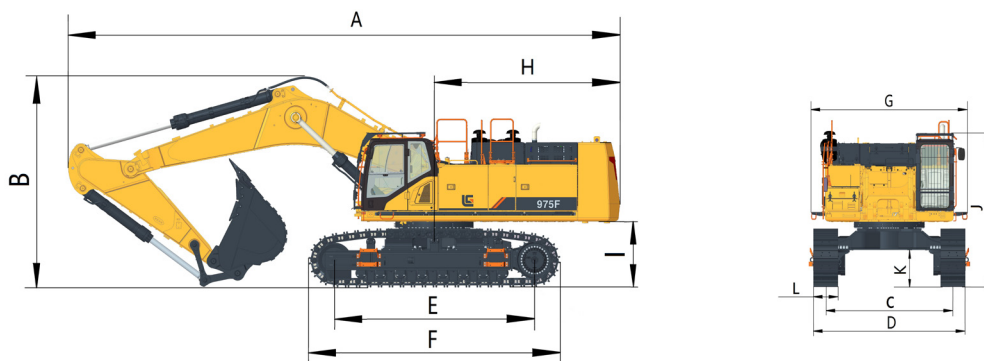
A. Max. Digging Reach	12,160 mm
B. Max. Digging Reach on Ground	11,900 mm
C. Max. Digging Depth	7,680 mm
D. Max. Digging Depth, 2.44 m (8') Level	7,530 mm
E. Max. Vertical Wall Digging Depth	5,150 mm
F. Max. Cutting Height	11,320 mm
G. Max. Dumping Height	7,020 mm
H. Min. Front Swing Radius	5,280 mm
Bucket Digging Force (ISO)	438 kN
Arm Digging Force (ISO)	331 kN

BUCKET PERFORMANCE

Std. Bucket Heaped Capacity (Referenced)	5.0 m ³
--	--------------------

SERVICE CAPACITIES

Fuel Tank	1,100 L
Engine Oil	46 L
Cooling System	77 L
Hydraulic Reservoir	360 L
Hydraulic System Total	680 L
DEF Tank	65 L



Guangxi Liugong Machinery Co., Ltd.

No. 1 Liutai Road, Liuzhou, Guangxi 545007, PR China
T: +86 772 3886124 E: overseas@liugong.com
www.liugong.com

03/2025 Designed by LiuGong

Specifications and designs are subject to change without notice. Machines shown may include optional equipment. LiuGong standard and optional equipment may vary from region to region. Please consult your LiuGong dealer for information specific to your area. Engine power kW is converted to horsepower (1 kW=1.3596 ps and 1 kW=1.3410 hp) in this file.